

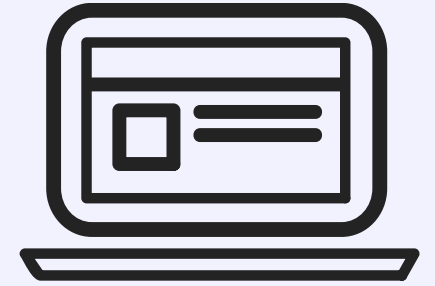
ICA04.ME

ELPT EXAM

Practical guide



THE EXAM



AVIATION ENGLISH

it checks your Aviation English knowledge

this is not an aviation knowledge test

this is not a radio operator test

it is graded 1-6

level 4,5,6 are operational

it takes around 45-60 minutes

it is supervised by Austro Control

you get the certificate

it is accepted by your CAA and provides the

language proficiency rating

THE EXAMINER



ŁUKASZ WIECZOREK

An airplane pilot with over five years of experience. A linguist. A flight instructor. A proud ICAO English level 6 holder. He flew in South Africa, Morocco, the Canary Islands, and in the Balkans. LPE Examiner accredited by Austro Contro.

“

FACILE DICTU, DIFFICILE FACTU

**With languages you are at home
anywhere...**

EDMUND DE WAAL

REQUIREMENTS

FORMAL

You need to be a flight crew license holder or the basic license trainee. The exam looks exactly the same for the first-time takers as for those of you making the language proficiency rating revalidation. You need an ID and a license or a course certificate.

EQUIPMENT

The exam is made fully online. It is crucial to have a stable internet connection, a Chrome or Firefox browser-equipped computer, a webcam, a microphone, and speakers.

TIME

You will need the total of around 75 minutes when you will not be disturbed by anyone.



EXAM PARTS



SEMI-DIRECT PART

It consists of a series of questions posed in the form of audio recordings. The questions may be played twice and you may also ask for additional clarification. The questions are all aviation related and their difficulty level is varied. This part of the exam lasts for around 30 minutes.

DIRECT PART

It consists of a conversation between the candidate and the examiner on aviation-related topics. It lasts around 15 minutes and it targets at checking the candidate's communication skills. It is a form of normal conversation based on the questions asked by the examiner.

ADMINISTRATIVE PART

It comes down to providing your personal data.

ATC RECORDINGS

In the semi-direct part at least two tasks are related to checking your radio communication understanding. At most times you will get an ATIS recording and a question to it. The question is posed before listening to the actual ATC/ATIS recording. You may ask for the repetition of both the question and the recording twice.



PICTURE DESCRIPTION

In the semi-direct part the candidate is asked to describe an aviation picture (photo). It is worth making an effort to give the photo some background story so that the description does not only focus on the photo itself but also on a broader perspective.



ASSESSMENT

PRONUNCIATION

native language
influence acceptable
but to the extent that
allows for normal
understanding

GRAMMAR

the knowledge of
basic grammatical
structures and using
them with small
mistakes allowing for
normal understanding

VOCABULARY

sufficient range
allowing to talk about
well-known topics
connected with work
and everyday life
issues.

FLUENCY

steady speaking pace;
the fluency of
expressing one's
thoughts, can be
slightly interrupted
when switching
between schematic and
loose conversation

ASSESSMENT

UNDERSTANDING

usually correct, small misunderstandings are allowed or asking for the explanation of non-standard situations.

INTERACTION

usually correct, quick, and accurate answers; looking for explanation when in doubt.

LEVEL 4

OPERATIONAL

It is valid for four years and after that time you will need to retake the exam. It is the lowest level allowing you to perform flights using English. It lets you make linguistic mistakes that do not affect the flight safety.





LEVELS 5/6

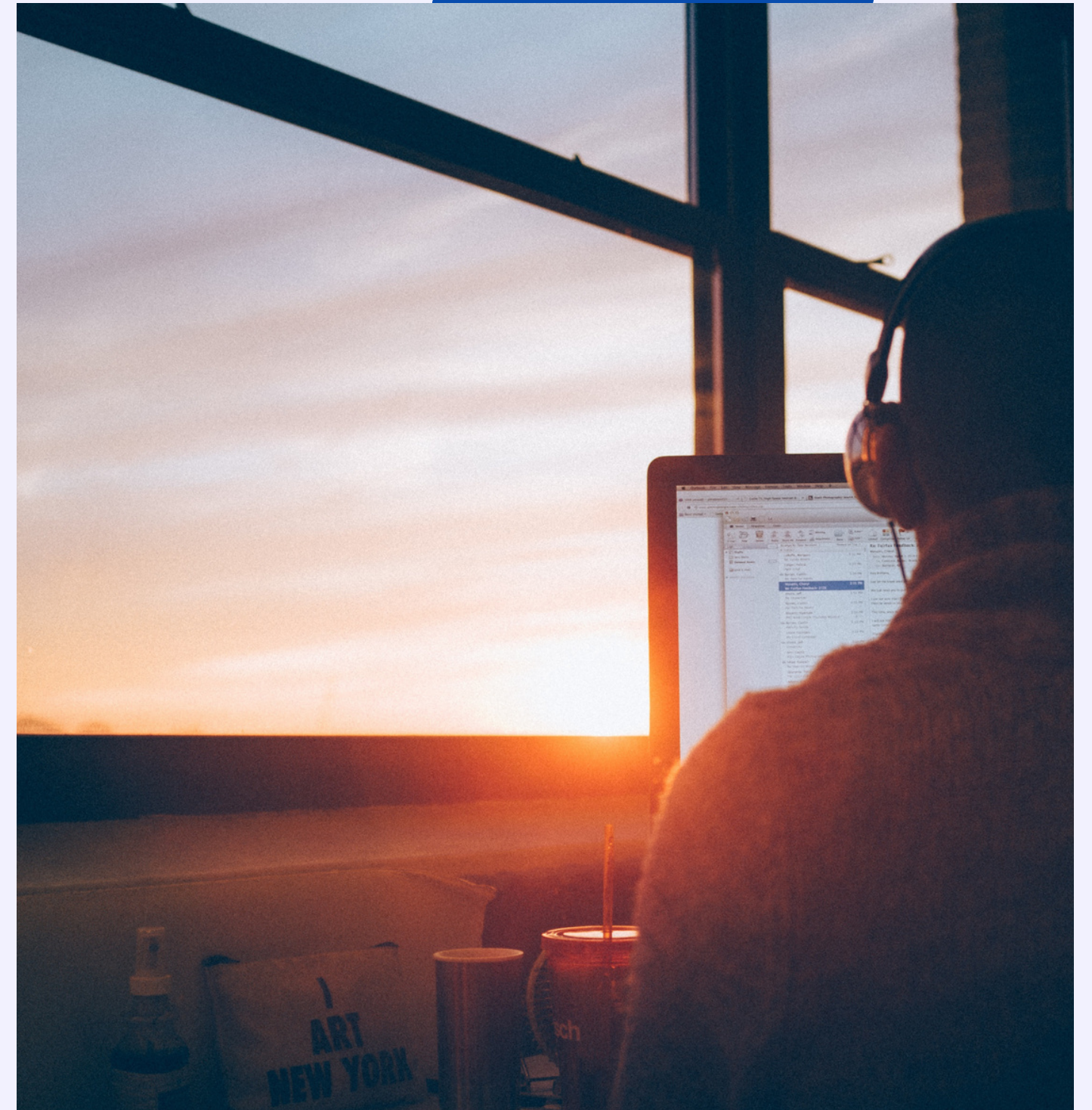
ADVANCED

They prove high language skills of the pilot. They are valid respectively for 6 years (lvl 5) and for life (lvl 6). To get them you need to prove your ability of using complex grammar, discourse markers, as well as English idioms.

LEVELS 1/2/3

NOT OPERATIONAL

Getting a grade of 1 through 3 does not let you get your language proficiency rating in your license. It means you will need to improve your skills before another attempt.



GETTING THE RATING

EXAM

After taking the exam it will be assessed by the LPE examiner and another LPLE expert.

GRADE

After the LPE and LPLE assessment you will get a language proficiency grade of levels 1 through 6

EXPERIENCE

Within the maximum of 7 days after taking the exam the certificate with the grade will be sent to you which you will need to send to your CAA.

RATING

On the basis of the certificate and the application your CAA will provide the language proficiency rating in your license based on your national regulations.

PREPARATION

GRAMMAR

Revise the basics - present, future, past simple and continuous, comparatives, and superlatives

VOCABULARY

Familiarise yourself with aviation and regular English expressions and collocation.

"FLOW"

Remember the exam only checks your language skills, not your aviation knowledge - speak, ask questions tell stories.

COURSES

Check our courses - we will get you ready for the exam and help you achieve a higher level.

RELAX

On the day of the exam take care of peace and quiet, good mood, and treat it as any other aviation conversation with a friend.

NOW WHAT?

COURSE

Go to www.icao4.me and choose the package that will prepare you for the exam.

DATES

Contact us over the phone or by the form at www.icao4.me to schedule the exam date at your convenience.

EXAM

We will organise it within 72 hours after registration if you are short on time!

RESULTS

After taking the exam the results together with the certificate will be sent to you within the maximum of 7 business days.

ICA04.ME

GOOD LUCK!

www.icao4.me

